



**Savannah River
National Laboratory™**

OPERATED BY SAVANNAH RIVER NUCLEAR SOLUTIONS

We put science to work.™

Savannah River National Laboratory - Underpinning Critical National Missions

Dr. Terry A. Michalske
Laboratory Director

*Briefing for Governor's Nuclear Advisory Council
April 9, 2015*

Celebrating Ten Years as a National Lab



SRNL at a Glance

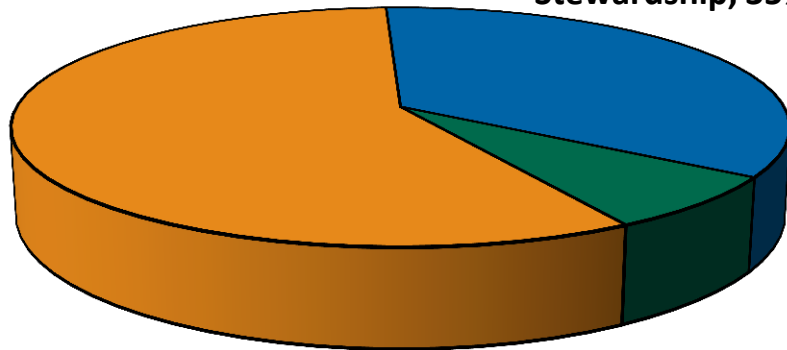
~ 832 Staff
 ~ \$214M (FY14 Executed)
 ~ 300 Discrete Work Activities
Multi-Program Laboratory
 > 65% of funding from non-SRS customers

Core Nuclear Capabilities

- Environmental Remediation and Risk Reduction
- Nuclear Materials Processing and Disposition
- Nuclear Detection, Characterization and Assessments
- Gas Processing, Storage and Transfer Systems

Safest National Lab – 2005-2014

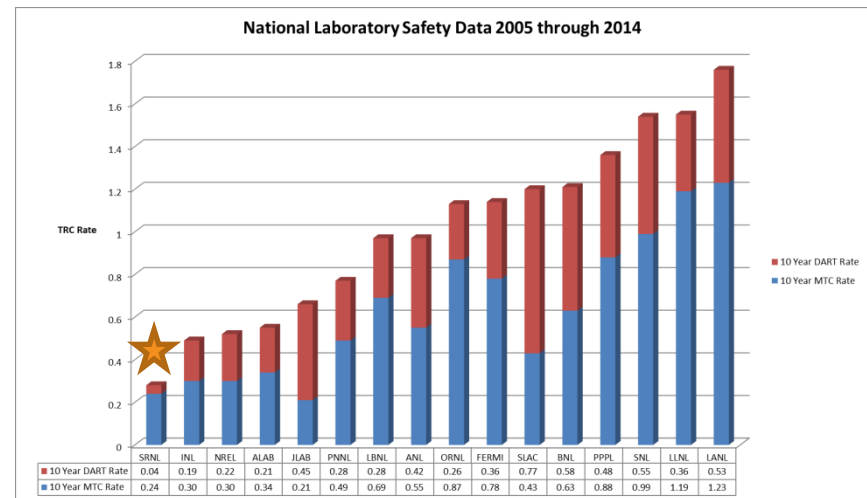
Environmental Stewardship, 35%



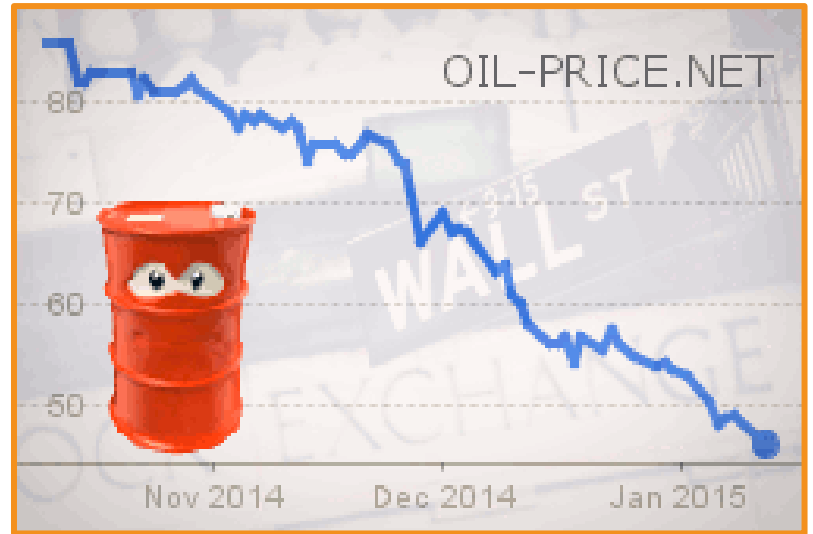
National Security, 58%

Clean Energy, 7%

SRNL FY14 Execution



Focus on National Challenges

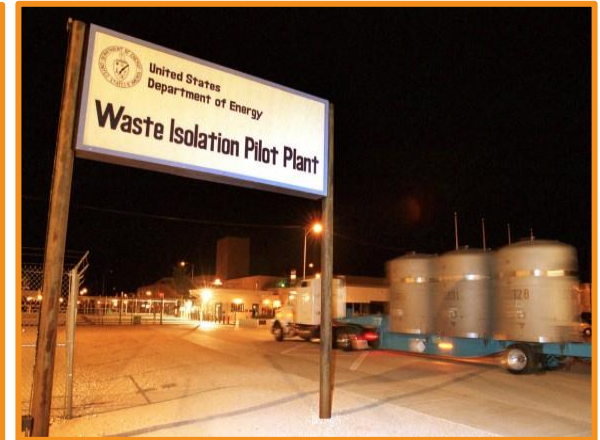


SRNL is Critical to DOE-EM Success



Over \$5 billion in projected savings in past five years

Advanced Technologies



Minority Serving Institution Program Management

Leading Initiatives at Hanford, WIPP

In National Security, Our Reach Extends Far Beyond SRS



■ Tritium Expertise



■ Event Signatures



■ FBI Laboratory



■ Mobile Plutonium Facility

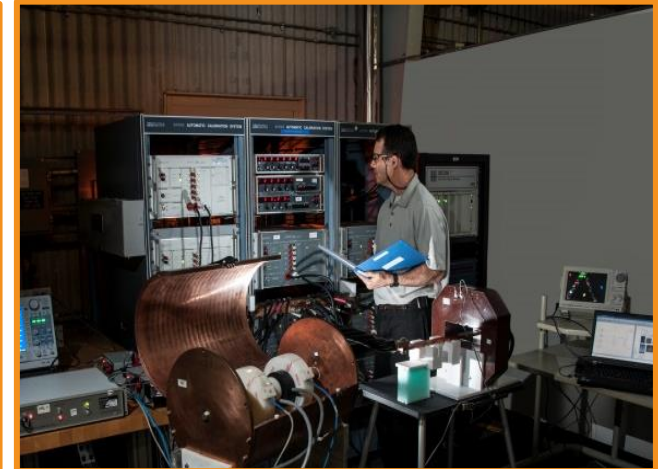
SRNL Contributes to Clean Energy Initiatives



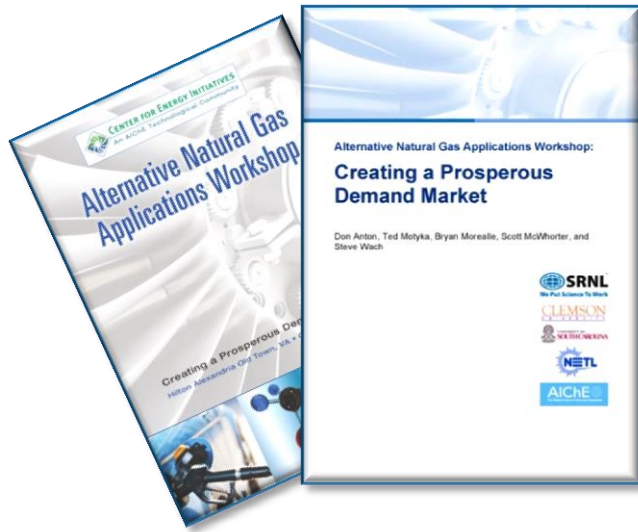
Hydrogen Research



Safe Nuclear Fuel



SmartGrid

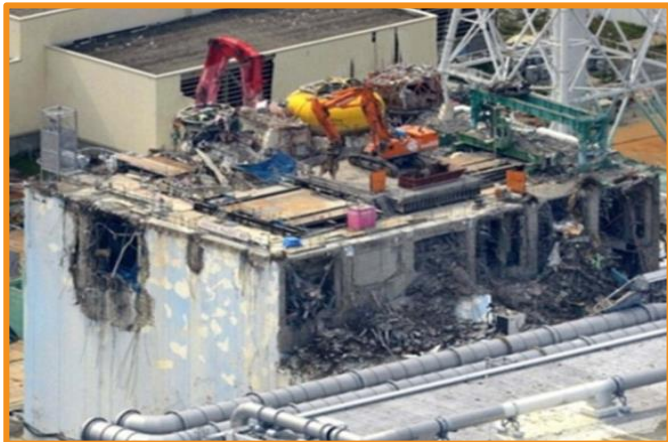


Natural Gas Leadership



Solar Research Recognition

SRNL's Work and Reputation are International in Scope



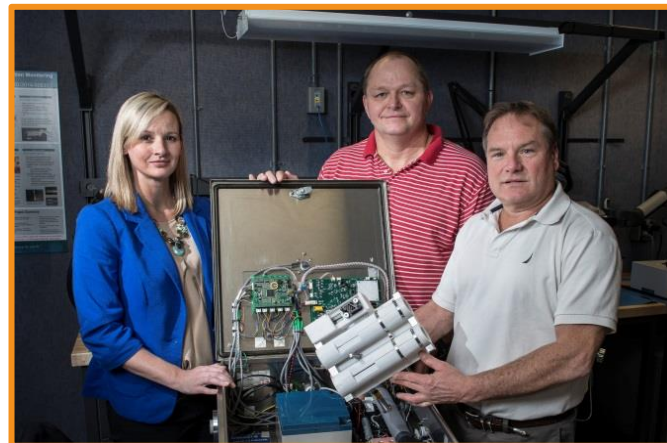
■ Support to Fukushima



■ Nuclear Packaging



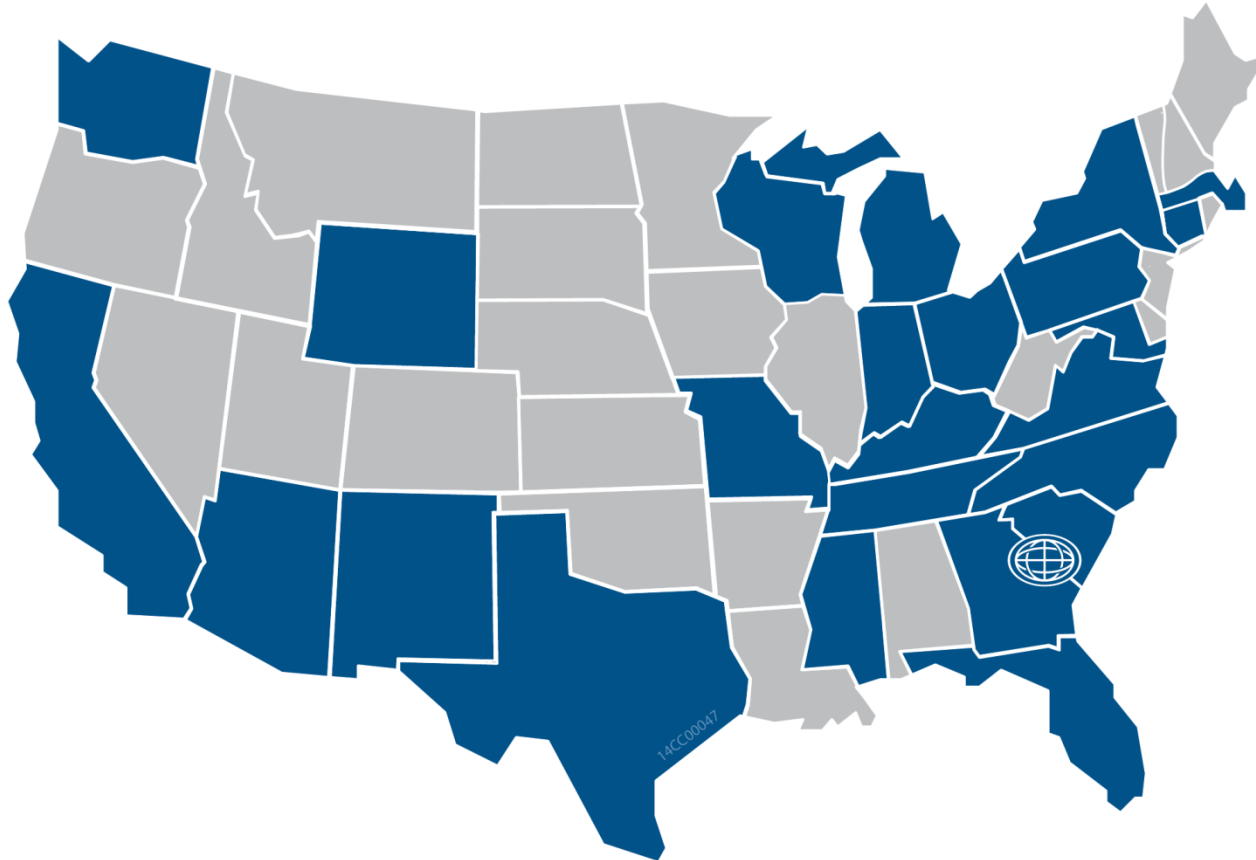
■ Technical Assistance



■ Nonproliferation: International protocols

Impacting National Economic Competitiveness

**Working with Companies in 24 States Through CRADAs and Other Agreements
(10 agreements in South Carolina)
Work for Non-Federal Entities (~\$24M 2008–2014)**



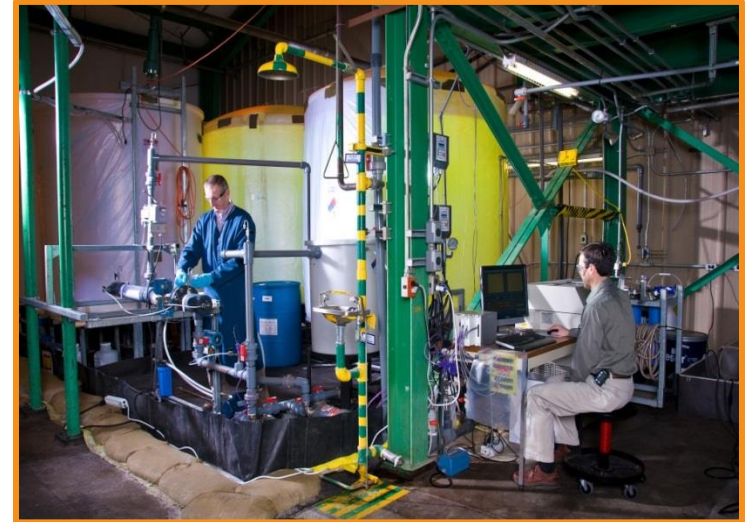
A Plan that Builds SRNL's Value to the Nation



EM Has Identified a Need for a New Collaborative Facility

- Adapt technology to reduce risk and cost
- Develop a workforce that will meet its needs
- Leverage expertise of academia and industry to further its mission

A Nuclear Chemical Manufacturing Collaborative (NCMC) is needed to adapt advanced manufacturing technologies for DOE missions.



SRNL: Science and Technology for National Challenges

